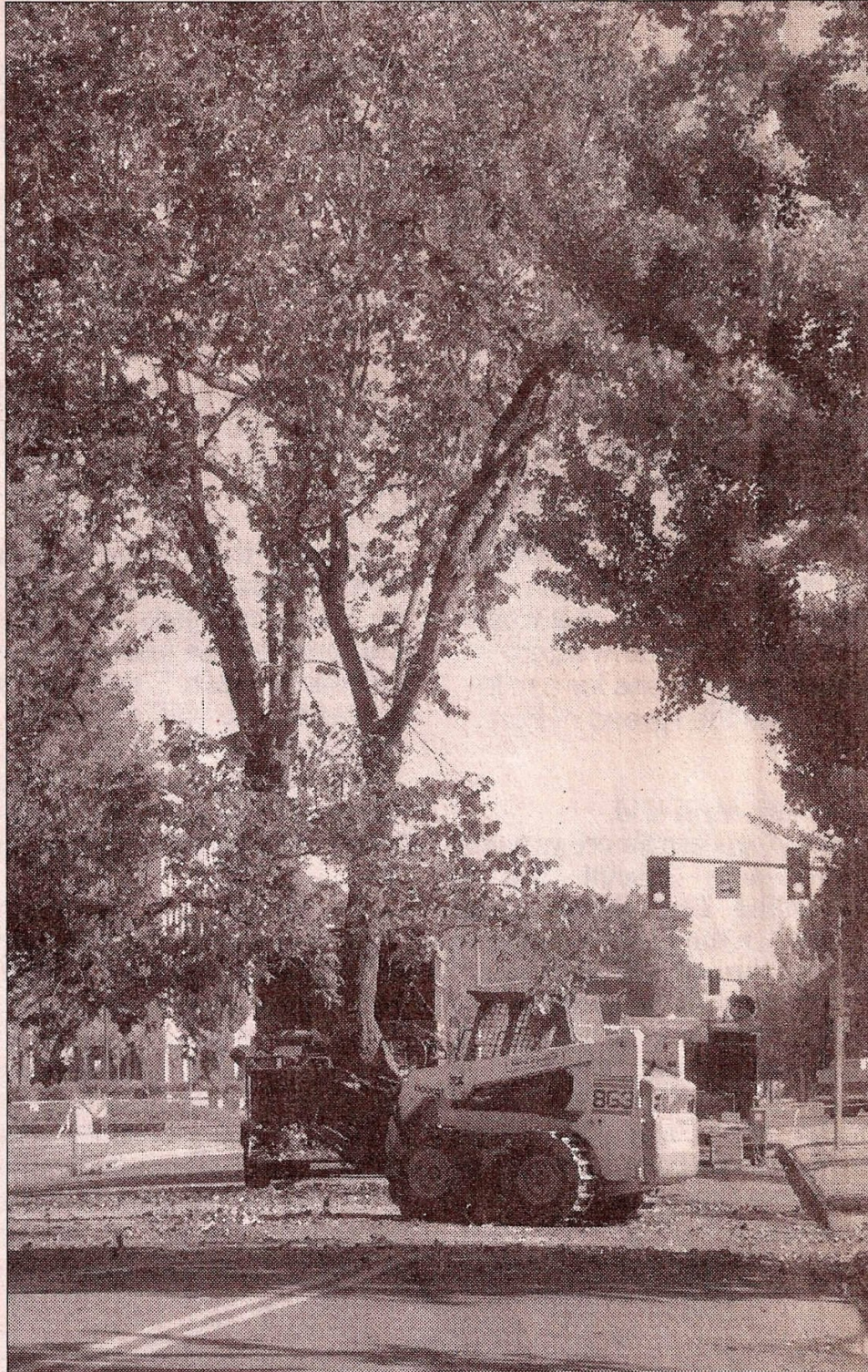


Elm comes down after limb breaks



FRANCHESCA PEREZ / Statesman Journal

PIECE BY PIECE: A crew from Elwood's Tree Service, with help from Ross Crane and Rigging Service, maneuvers a portion of a rock elm Saturday morning. The tree, estimated to be about 100 years old, was removed from the front of the state Transportation Building on the 300 block of Capitol Street NE in Salem. A crane helped lift the top branches down to the street. The Oregon Department of Transportation said two certified arborists determined that the tree needed to be cut down when a large limb broke off and left the tree irreparably damaged.